

LOCHGILPHEAD ACTIVE TRAVEL: PLACEMAKING

- Consideration to local material and planting palettes, building on the local greenstone used in Colchester Square and Front Green.
- Mini “pocket parks” provide more intimate spaces along the active travel route, offering rest and respite but also opportunity for social interaction
- Native tree planting is used to reinforce a sense of place and add subliminal wayfinding to the streetscape
- Interventions appropriate for the small town character of the Lochgilphead conservation area.

Key:

1. Tree Avenue - Dalmuir Square (erz 2023)
2. Tree Avenue - Lochgilphead Front Green (erz 2022)
3. Benches at pause points - Dalmuir Square (erz 2023)
4. Placemaking - Lochgilphead (erz 2022)
5. Seating Edge - Dalmuir Square (erz 2023)
6. Seating Edge - Dunoon Waterfront (erz 2018)



1.



2.



3.



4.



5.



6.

LOCHGILPHEAD ACTIVE TRAVEL: RAIN GARDENS

- Proposals include a SUDs strategy which employs rain gardens along street edges to absorb, filter and slow rate of surface water discharge into the existing below ground drainage network
- Species selection will aim to maximise biodiversity and seasonal interest
- Planting mixes will be specified to minimise maintenance requirements, ensuring ongoing health of the plants and operation of the rain garden system
- This builds on the investments already made into flood control in Lochgilphead, especially the Front Green

Key:

1. Grey to Green - Sheffield
2. Derbyshire Street - London
3. PWPLA
4. Waltham Forest - London
5. Golden Triangle - Washington DC
6. Enfield - London



1.



2.



3.



4.



5.



6.

LOCHGILPHEAD ACTIVE TRAVEL: MATERIALS

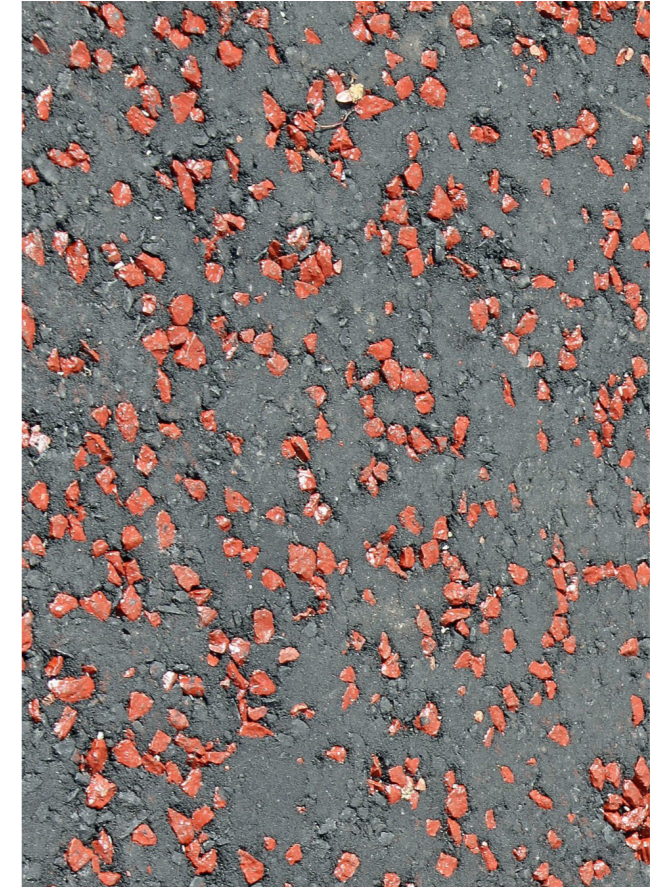
- Existing material palette of Lochgilphead considered e.g. use of local greenstone or whinstone sett paving
- Argyll and Bute Council preferred materiality considered e.g. use of stainless steel furniture
- Red tar and chip surfacing employed as per Argyll and Bute Council requirement

Key:

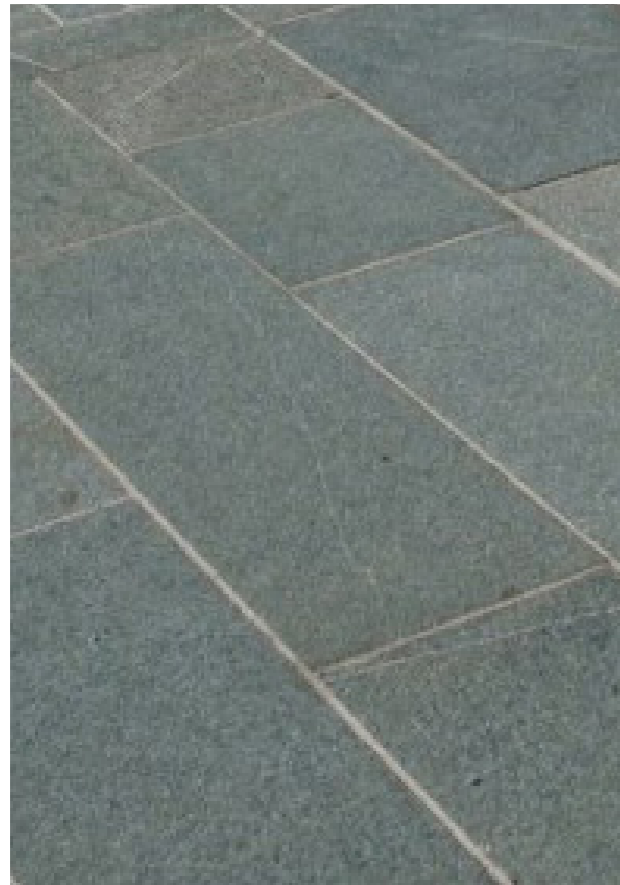
- 1.Red tar - Cycling lane Bristol
- 2.Red Chip
- 3.Greenstone
- 4.Whinstone sett paving
- 5.Benches - Ardrishaig (erz 2020)
6. Stainless Steel - Ardrishaig (erz 2020)



1.



2.



3.



4.



5.



6.

LOCHGILPHEAD ACTIVE TRAVEL: TREES

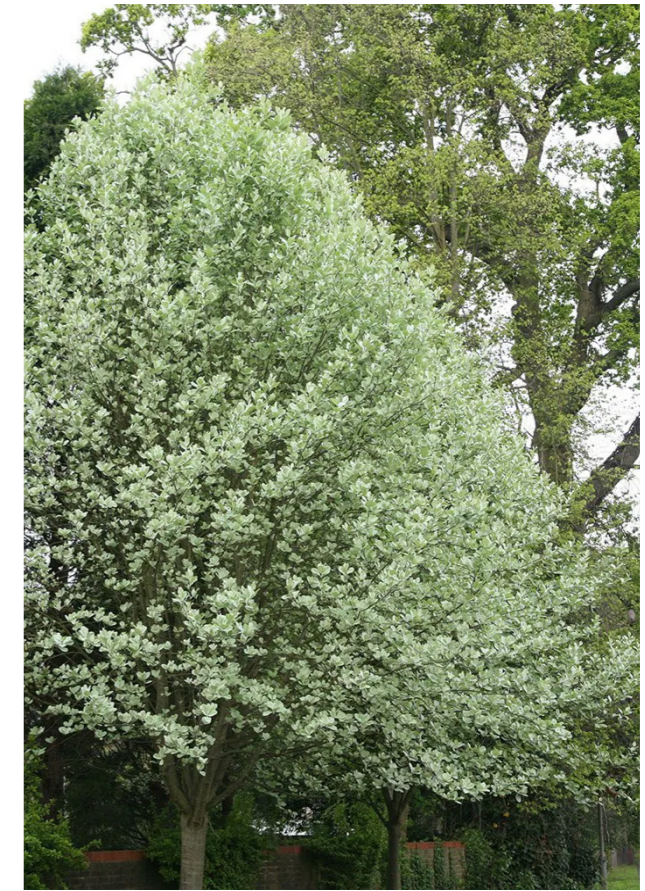
- Two distinct category of tree relative to proposals: Wayfinding or Placemaking
- Wayfinding trees to act as route markers to improve legibility of route and a sense of place
- Placemaking trees to streets, squares and pause points to provide shelter and shade and a more intimate scale
- Trees species have been considered relative to the coastal location and species found elsewhere in the town

Key:

- 1.Wayfinding - Hornbeam – *Carpinus betulus*
- 2.Wayfinding - Whitebeam - *Sorbus aria 'Lutescens'*
- 3.Wayfinding - Scottish cherry - *Prunus avium*
- 4.Placemaking - Black pine - *Pinus nigra subsp. nigra*
- 5.Placemaking - Birch - *Betula pendula*
- 6.Placemaking - Aspen - *Populus tremula*



1.



2.



3.



4.



5.



6.